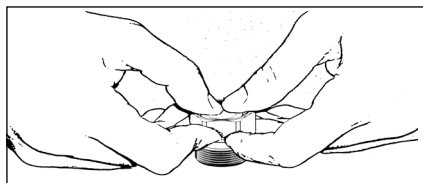
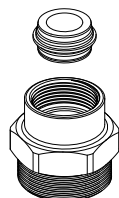




PROLUNGHE Art.8853-8854 DIRITTE CON OGIVA DI TENUTA
STRAIGHT EXTENSION Art.8853-8854 WITH SEALING GASKET

OGIVA DI TENUTA
SEALING GASKET WITH O-RINGS

CORPO PROLUNGA
EXTENSION BODY



PREMERE L'OGIVA ART.8855 NELLA PROLUNGA COME DA FIGURA FINO AL SUO BLOCCAGGIO E SUCCESSIVAMENTE AVVITARE LA PROLUNGA SULL'ATTACCO INTERCAMBIABILE FAR Ø16.

PRESS THE GASKET ART.8855 INTO THE EXTENSION AS INDICATE IN THE FIGURE UNTIL IT IS LOCKED. THEN SCREW THE EXTENSION ON THE FAR Ø16 INTERCHANGEABLE CONNECTION.



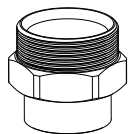
CALOTTA PER TUBO
NUT



ANELLO DI BLOCCAGGIO IN OTTONE
BRASS LOCKING RING



ADATTATORE
ADAPTER



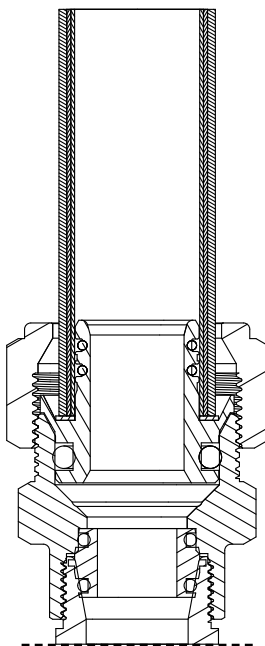
PROLUNGA
EXTENSION



OGIVA DI TENUTA COMPLETA DI O-RINGS
BRASS SEALING GASKET WITH O-RINGS



ATTACCO INTERCAMBIABILE FAR Ø16
FAR Ø16 INTERCHANGEABLE CONNECTION



CARATTERISTICHE TECNICHE

Corpo raccordo: UNI EN 12165:98 CW617N
 Ogiva di tenuta: UNI EN 12164:98 CW614N
 Pressione nominale: 10 bar
 Campo temperatura di utilizzo: 5° + 95°C
 O-Ring : EPDM

TECHNICAL FEATURES

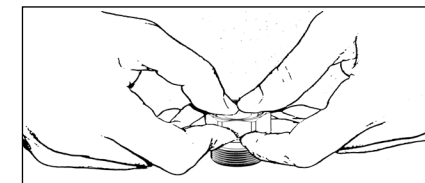
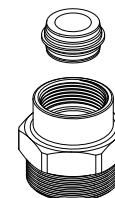
Extension body: UNI EN 12165:98 CW617N
 Sealing gasket: UNI EN 12164:98 CW614N
 Nominal pressure: 10 bar
 Temperature range: 5° + 95°C
 O-Ring : EPDM



PROLUNGHE Art.8853-8854 DIRITTE CON OGIVA DI TENUTA
STRAIGHT EXTENSION Art.8853-8854 WITH SEALING GASKET

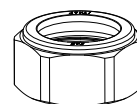
OGIVA DI TENUTA
SEALING GASKET WITH O-RINGS

CORPO PROLUNGA
EXTENSION BODY



PREMERE L'OGIVA ART.8855 NELLA PROLUNGA COME DA FIGURA FINO AL SUO BLOCCAGGIO E SUCCESSIVAMENTE AVVITARE LA PROLUNGA SULL'ATTACCO INTERCAMBIABILE FAR Ø16.

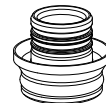
PRESS THE GASKET ART.8855 INTO THE EXTENSION AS INDICATE IN THE FIGURE UNTIL IT IS LOCKED. THEN SCREW THE EXTENSION ON THE FAR Ø16 INTERCHANGEABLE CONNECTION.



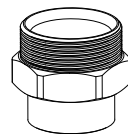
CALOTTA PER TUBO
NUT



ANELLO DI BLOCCAGGIO IN OTTONE
BRASS LOCKING RING



ADATTATORE
ADAPTER



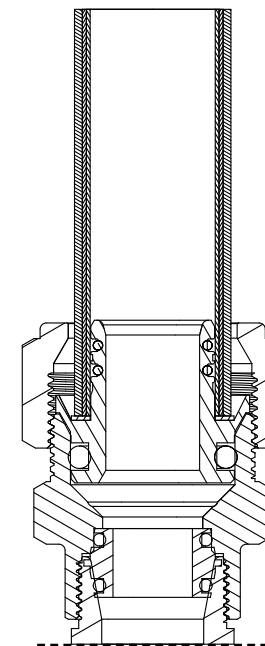
PROLUNGA
EXTENSION



OGIVA DI TENUTA COMPLETA DI O-RINGS
BRASS SEALING GASKET WITH O-RINGS



ATTACCO INTERCAMBIABILE FAR Ø16
FAR Ø16 INTERCHANGEABLE CONNECTION



CARATTERISTICHE TECNICHE

Corpo raccordo: UNI EN 12165:98 CW617N
 Ogiva di tenuta: UNI EN 12164:98 CW614N
 Pressione nominale: 10 bar
 Campo temperatura di utilizzo: 5° + 95°C
 O-Ring : EPDM

TECHNICAL FEATURES

Extension body: UNI EN 12165:98 CW617N
 Sealing gasket: UNI EN 12164:98 CW614N
 Nominal pressure: 10 bar
 Temperature range: 5° + 95°C
 O-Ring : EPDM